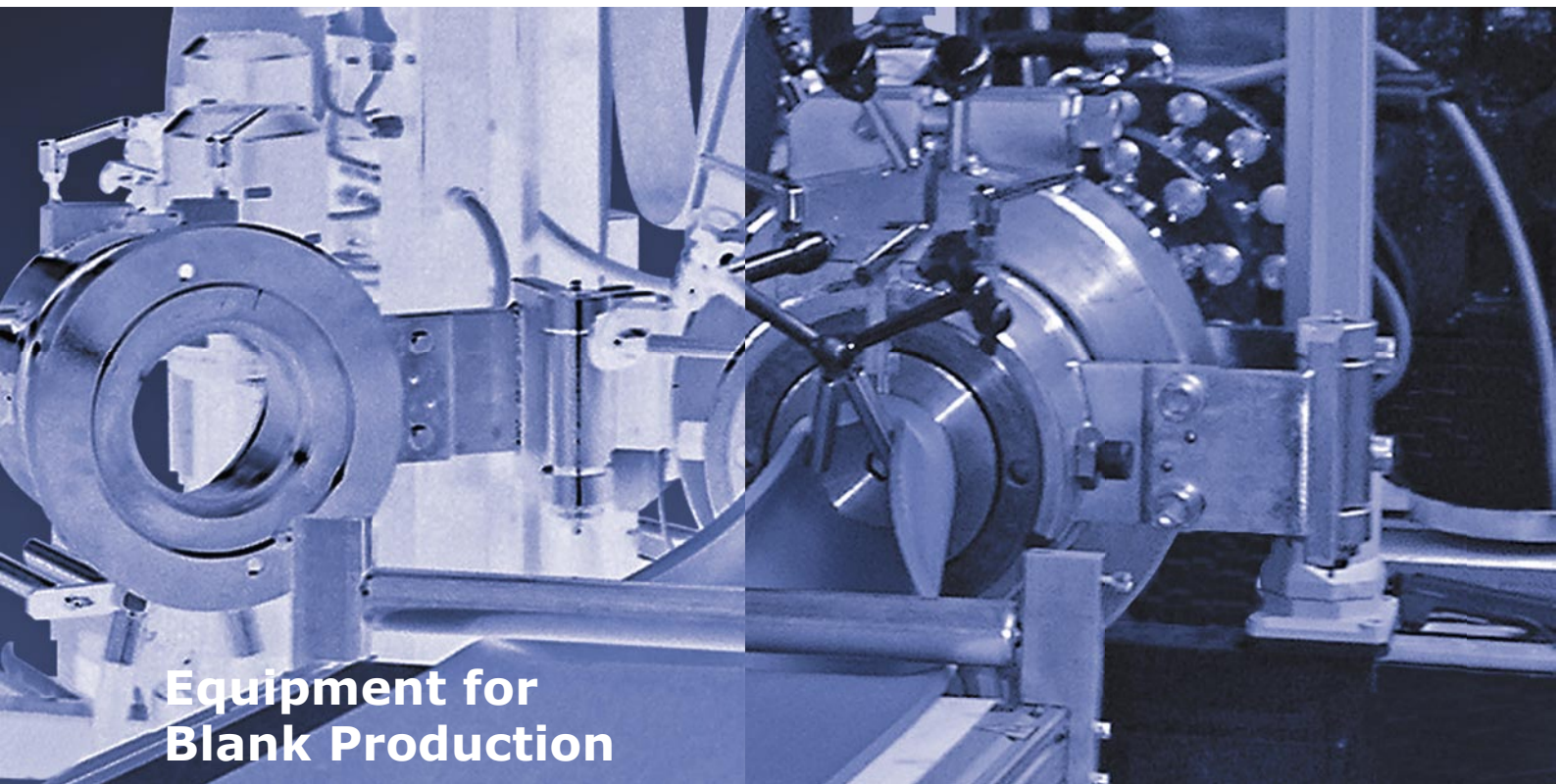


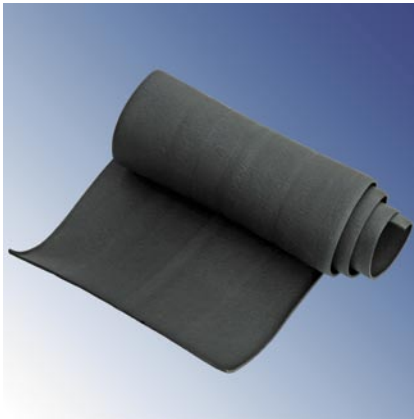


## Tailor-made Rubber Extrusion



**Equipment for  
Blank Production**

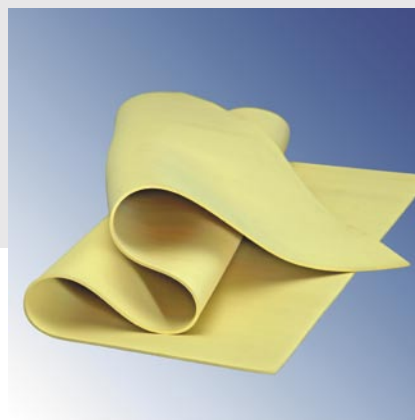
# Equipment for Blank Production



The versatility of the extrusion technology allows its use in the most different stages of a production process.

Apart from direct moulding extruders can also be used for the material preparation and the production of semi-finished products.

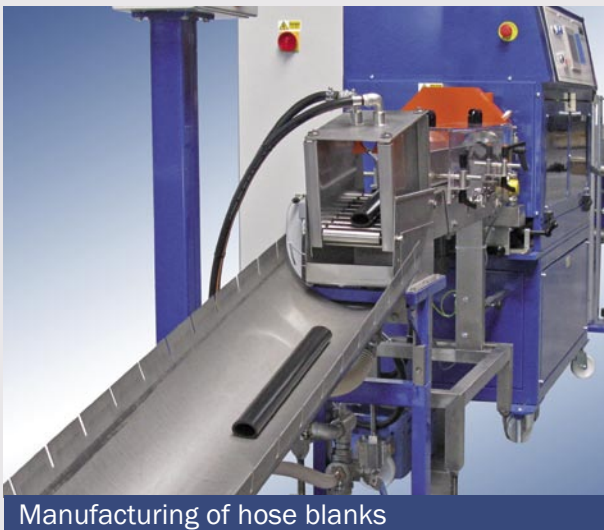
Particularly for the field of blank production rubicon offers machines and equipment individually adapted to the specific requirements.



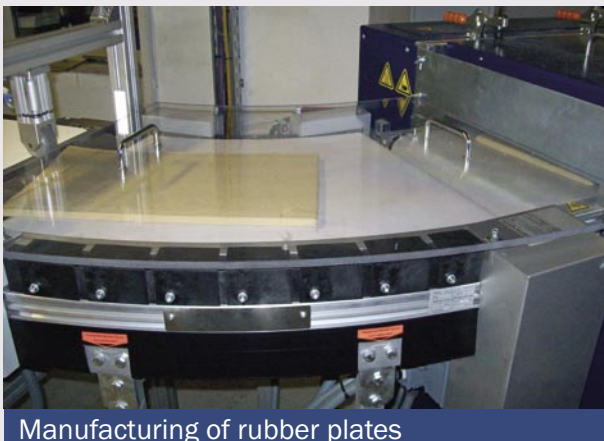
Provided with special equipment and extrusion heads the rubber - extruders can be used for the production of most different blanks.

### Fields of Application

- Extrusion of blanks like round cords, rubber sheets and plates
- Production of preforms for further processing in vulcanization presses, injection moulding machines, die cutters etc.
- Production of pellets
- Preheating of compounds for feeding of following machines
- Straining (sieving) of the rubber compound at the same time with the extrusion of the blank
- Blending of compound batches



Manufacturing of hose blanks



Manufacturing of rubber plates

# rubicon Extruders for the Production of Blanks

Due to high dimensional accuracy and fast cleaning possibilities the rubicon - extruders are excellent suitable for the production of blanks and preforms.

## Extruder Characteristics

- Accurate product geometries at small and large extrudate cross sections
- Flexibly applicable both for small series and for bulk production
- Simple cleaning of the feeding zone by hinged feed roll



Standard extruder EEK 45.14

- Fast material and dimension changes are possible due to the extrusion heads, which are easy to clean and to handle
- For small load quantities and frequent compound change in particular the small extruders are distinguished by high output and small compound waste



Laboratory extruder EEK 32.12

In order to avoid a carry-over of material with frequent compound changes, rubicon offers different concepts for the fast and simple cleaning of screw and extrusion unit.

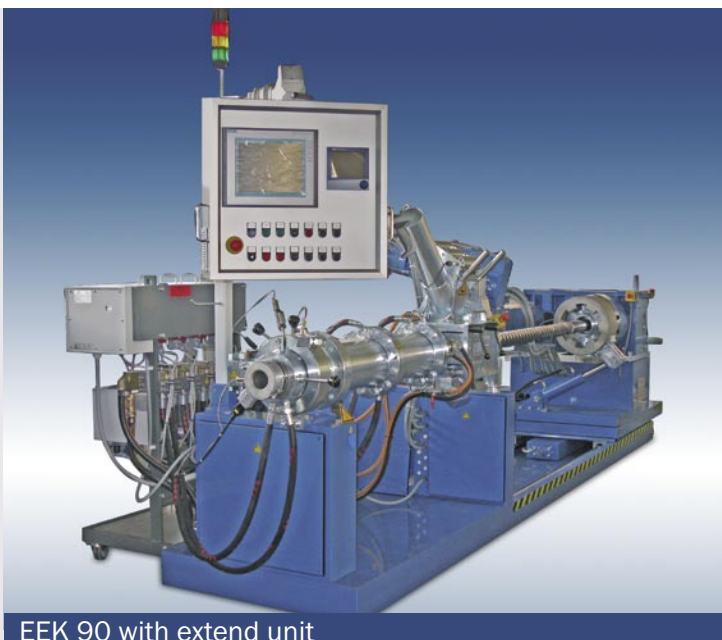
The extruder can be equipped with a blowing out device for the fast disassembly of the screw.

The water is blown out with compressed air from the screw.

This method saves time and avoids water leakages during screw change.



EEK 63 with blowing out device



EEK 90 with extend unit

The hydraulically operated extend unit permits the free access to the screw for cleaning purposes.

Therefore the screw is hydraulically driven out of the extrusion unit together with the drive unit.

A separately driven feed roll causes an adapted strip supply and higher process stability.

# rubicon Special Equipment for Blank Production

Particularly for production of blanks rubicon offers a multiplicity of solutions and accessories for all extruder sizes.



EEK 32 with granulating unit

For the production of rubber pellets rubicon offers special granulating units.

The round cords moulded by the extrusion head are cut into even pellets by a rotary cutting unit.

The pellet size can be adjusted individually.

For the extrusion of rubber sheets the extruders can be equipped with slit tube heads or broad heads.

The optimal design of the extrusion heads ensures an even thickness of the sheets.

The rubber sheets can be cut into even plates by a following cutting machine.



Slit tube head

With the offered solutions blanks can be made of most diverse materials, like FPM, NBR, H-NBR, EPDM or CR.

For the production of cut blanks in the continuous extrusion procedure the extruder can be equipped with a blank cutting unit.

This unit allows cutting blanks of extruded hoses or strings.



EEK 90 with blank cutting unit



rubicon offers additionally the appropriate downstream technology such as feeding devices, conveyors, caterpillars, cooling units and cutting machines as well as measuring and control devices.

## Contact

rubicon Gummitechnik und Maschinenbau GmbH  
Hans-Dittmar-Straße 3  
06118 Halle/Saale  
GERMANY

Tel. +49 345 5 30 15 - 0  
Fax +49 345 5 30 15 - 15  
E-mail [info@rubicon-halle.de](mailto:info@rubicon-halle.de)  
Internet [www.rubicon-halle.de](http://www.rubicon-halle.de)

