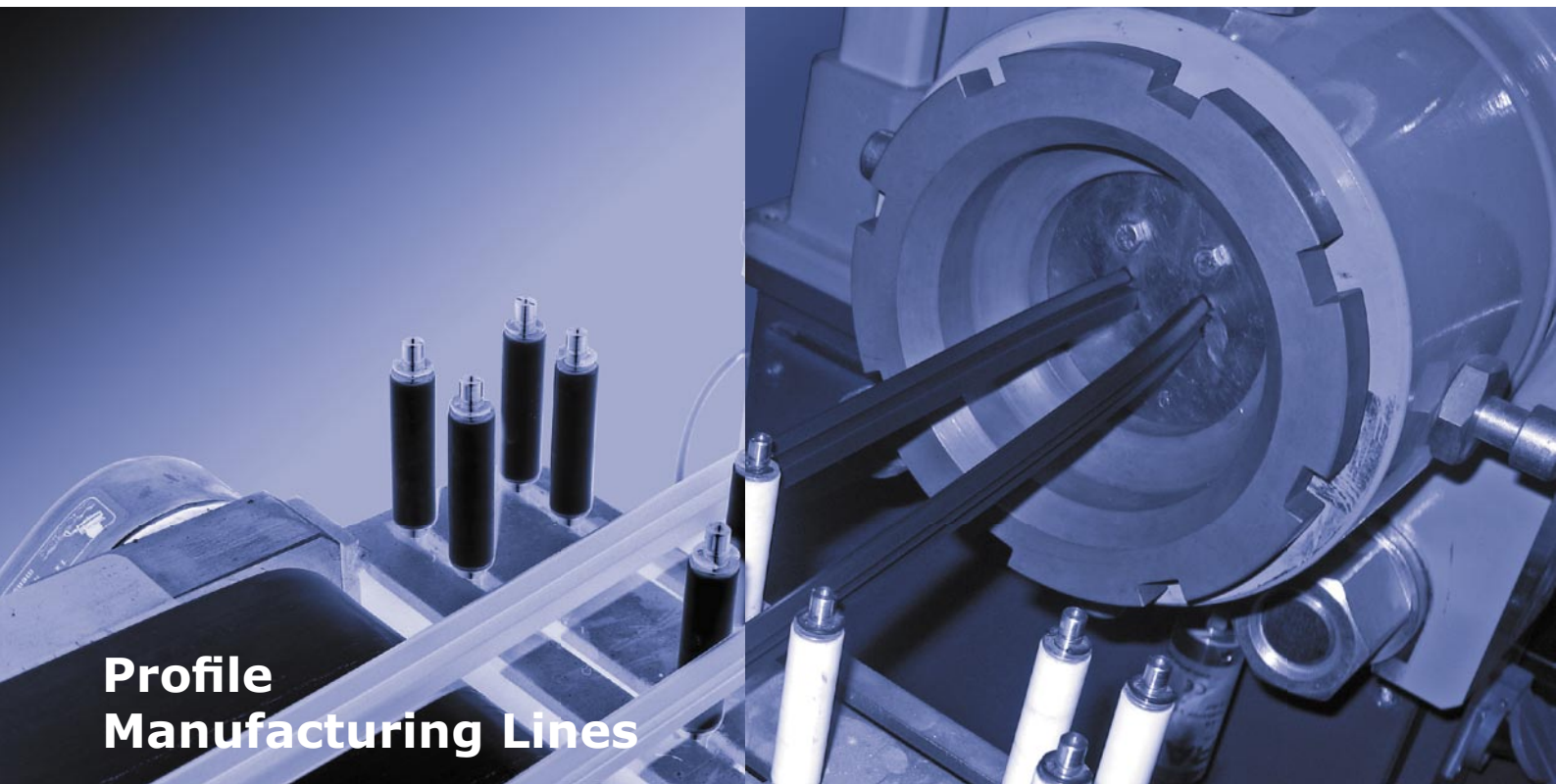




Tailor-made Rubber Extrusion

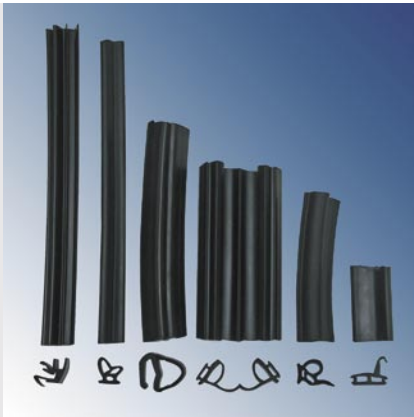


**Profile
Manufacturing Lines**

EN

Profile Manufacturing Lines

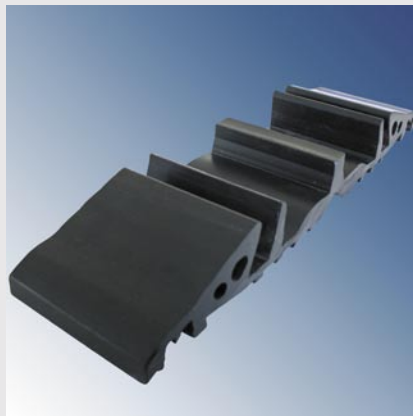
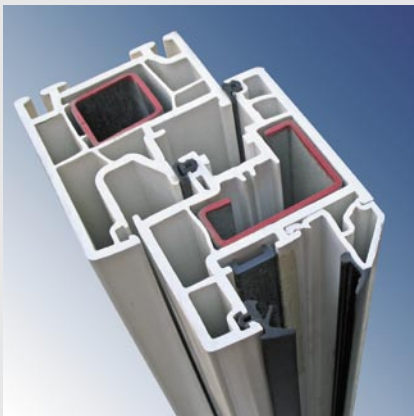
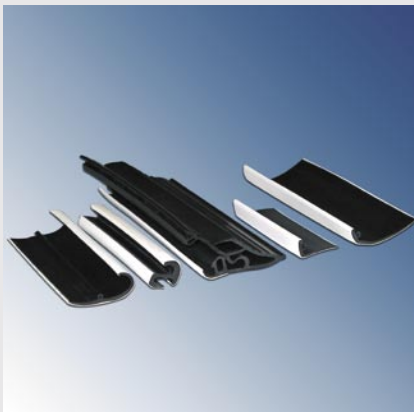
rubicon offers complete extrusion lines for the production of rubber profiles from one source - from the high performance extruder over the suitable vulcanization method up to the downstream technology.



Rubber profiles are used as seals within all ranges - both in automobile and building industry and for medicine, household, road construction, shipping and so on.

With decades of experience in the manufacturing of machines for the rubber processing industry rubicon produces production lines individually adapted to the particular requirements.

Our know-how about suitable methods, technologies, compounds and also the die design makes the optimal setting of the lines possible and consequently guarantees a high product quality and efficiency.



rubicon High Performance Vent Extruder

The quality of the profile is primarily determined by the extruder. Therefore the rubicon - high performance vent extruders are used for the production of nonporous extrudates.

The easily volatile components of the rubber compound are removed by using a custom-built screw and the degassing barrel with attached vacuum pump.

The vent extruder achieves an extremely high output of up to 600 kg/h because of the special screw geometry.



EEK 90.21 V in salt bath vulcanization line



Separately driven feed roll

In order to optimize the material feeding, the vent extruder can be equipped with a separately driven feed roll.

This allows it to adapt the feeding behaviour to the particular compound characteristics.

The even feeding resulting from it has a share in a constant output of the vent extruder with high throughput rates.

Vulcanization

With the manufacturing of profiles continuous vulcanization systems are used. The choice of the method depends on the material and the product geometry. rubicon uses different methods for the vulcanization of profiles.

rubicon Salt Bath Vulcanization Lines



20 m Salt bath vulcanization line

- Suitable for sulphur and peroxide cured compounds
- For profiles with small and middle cross sections and complex geometries
- Salt bath lengths of 20 and 26 m
- Line speeds up to 70 m/min
- Salt bath temperature up to 250°C

- Electrically or gas-heated
- With following washing unit for cleaning the profile of adhering salt
- Cooling of the endless profile by following cooling device
- Environmentally friendly and economically due to minimum salt loss by conditioning of the washing water in an innovative salt recycling system

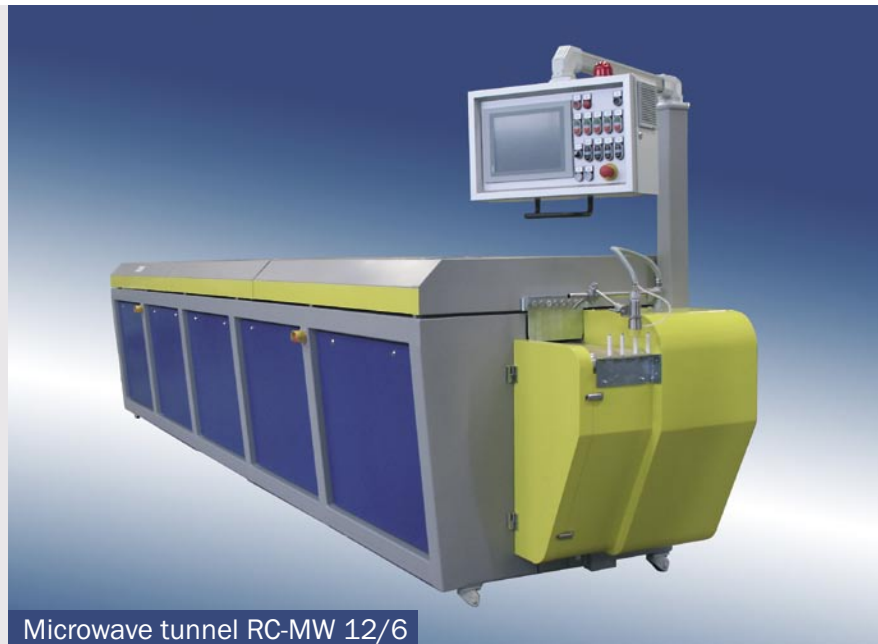


Salt recycling system

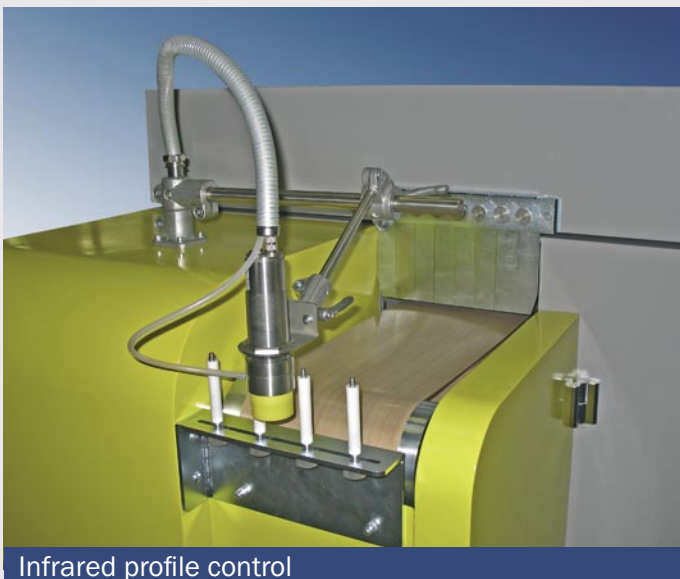
rubicon Microwave Vulcanization Lines

The tunnel, which is used for the continuous vulcanization of rubber profiles, is characterised by a high speed of vulcanization and low energy consumption.

- Suitable for sulphur cured compounds
- Suitable for rubber profiles with large or irregular cross sections
- The microwave channel is geared to the constant heating of the profiles
- The rubber surface is additionally heated by hot-air circulation
- The variable power control provides a high flexibility of the line



Microwave tunnel RC-MW 12/6



Infrared profile control

- The special energy feed-in produces a particularly homogeneous field
- The magnetrons are protected by 3-stub-motor-tuners and circulators
- 12, 18 or 24 kW microwave power
- Line speeds up to 50 m/min
- For final curing rubicon offers 12 m hot-air tunnels in corresponding design

rubicon Hot-air Vulcanization Lines

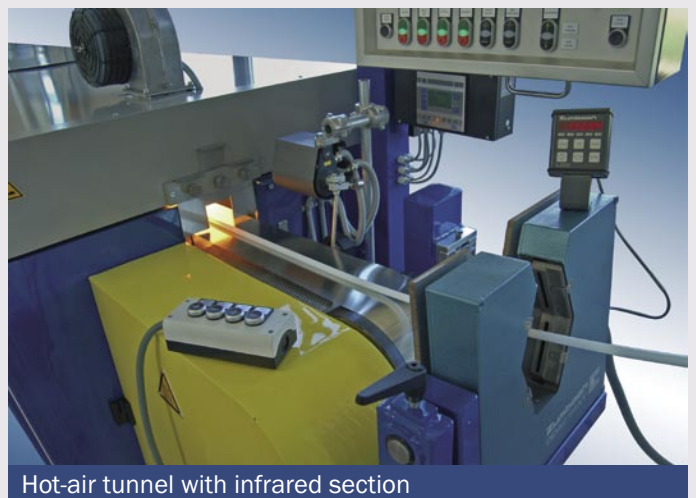
The rubicon - hot-air tunnels can be used as independent plants or in combination with microwave tunnels.



Hot-air tunnel RC-HLT 8 EL

- Suitable for sulphur cured compounds
- Heating up of the air by electrical air heaters
- Efficient heat transmission by reverse flow method
- Line speed up to 50 m/min
- Transport of the extrudates through the treatment channel on glass fabric belt

- Air circulation takes almost place in recirculating air operation
- Heating up of the extrudate in reverse method
- Vulcanization of metal-reinforced profiles and cellular materials possible
- User-related line design



Hot-air tunnel with infrared section

Feeding and Downstream Equipment

The lines for the production of profiles can be completed with the appropriate downstream technology according to the requirements and desires of the customer.



The production lines can be completed among other things with the following equipment:

- Strip feeding devices
- Infrared shock tunnels
- Cooling devices
- Release agent applying units
- Caterpillars
- Cutting devices
- Winder
- Dancer control units
- Inkjet printers



Contact

rubicon Gummitechnik und Maschinenbau GmbH
Hans-Dittmar-Straße 3
06118 Halle/Saale
GERMANY

Tel. +49 345 5 30 15 - 0
Fax +49 345 5 30 15 - 15
E-mail info@rubicon-halle.de
Internet www.rubicon-halle.de

